

THERMOSTATS & CONTROLLERS

PROGRAMMABLE/WIRELESS THERMOSTAT PRESTIGE IAQ



DESCRIPTION

The **Prestige** High Definition (HD) Color Touchscreen Thermostat provides control of 24 VAC of heating and cooling systems. RedLINK™ enabled to work with compatible wireless accessories. These newly updated thermostats come in a variety of colors and can be accessed via the internet or through the mobile app available from Honeywell. The new Prestige is on the leading edge of design and remote access when it comes to thermostats for both residential and light commercial applications. Check out the entire line for one that fits your application.

FEATURES

- **60% smaller than Prestige 2.0 and available in 4 colors**
- **Delta T Alerts and Diagnostics inform customers when their system is not operating as expected**
- **Residential or light commercial use**
- **User Interaction Log provides a searchable history of setting changes**
- **Assignable outputs for indoor air quality and staging control**
- **Selectable staging options**
- **Customizable service reminders**
- **Up to 4H/2C heat pump or 3H/2C conventional systems**

NEW!

Honeywell



Prestige IAQ-EIM



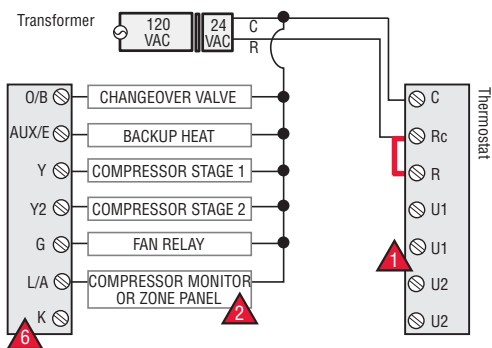
SPECIFICATIONS

Supply Voltage	24 VAC	Temperature Setting Range	
System Type	4 heat/2 cool heat pump and up to 3 heat/2 cool conventional	Heating	40° to 90°F (4.5° to 32°C)
Sensor Type		Cooling	50° to 99°F (10° to 37°C)
Temperature	Onboard 20kΩ NTC	Operating Temperature	
Humidity	Capacitive	Thermostat	32° to 120°F (0° to 48.9°C)
Communication	RedLINK devices	EIM	-40° to 165°F (-40° to 73.8°C)
Baud Rate	900 MHz frequency range	Operating Humidity	
Analog Input	EIM	Thermostat	5% to 90% condensing,
	2 Universal inputs, temperature or dry contact selectable (not available with single- piece thermostat)	EIM	5% to 95% non-condensing
Output		Dimensions	
EIM	7	Thermostat	
Standalone	6 (USB on some models)	Prestige IAQ	4-1/2"W x 3-1/2"H x 7/8"D (11.5 x 8.9 x 2.2 cm)
Contact Rating		Prestige 2.0	6-13/16"W x 3-7/8"H x 1-7/16"D (17.3 x 9.9 x 3.6 cm)
EIM terminals W-O/B, Y, W3-Aux2, A-L/A	Maximum Current 1.0A,	EIM	9.34"H X 4.83"W X 1.6"D (23.7 x 12.3 x 4.1 cm)
EIM terminals G, U1, U2, U3	Maximum Current 0.5A	Measurement Range	Building material and content dependent
EIM terminals W2-Aux1, Y2	Maximum Current 0.6A	Weight	2.0 lb (maximum item)
Temperature Sensor Accuracy	± 1.5° at 70°F (0.75° at 21°C)	Approvals	This device complies with Part 15 of the FCC Rules. (15.19, 15.21, 15.105)
		RoHS Statement	Yes
		Warranty	5 years (excludes batteries)

PROGRAMMABLE/WIRELESS THERMOSTAT PRESTIGE IAQ

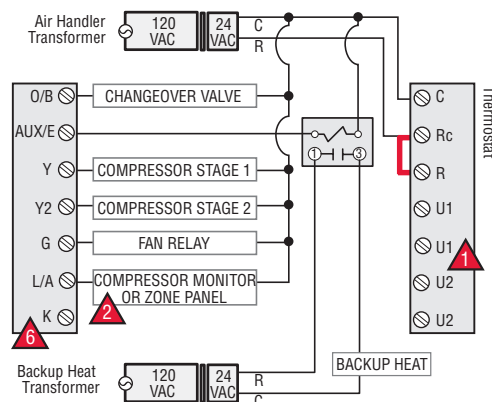
WIRING - THX9321 & THX9421

Typical wiring of a 3-heat / 2-cool heat pump system with one transformer.



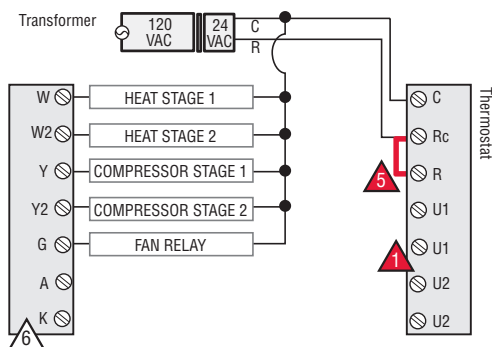
Prestige THX9321 and heat pump system with one transformer

Typical wiring of a 3-heat / 2-cool heat pump system with two transformers.



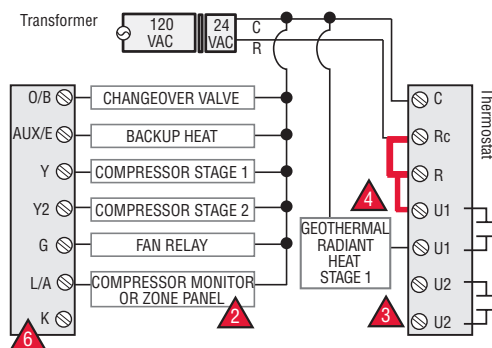
Prestige THX9321 and heat pump system with two transformers

Typical wiring of a 2-heat / 2-cool conventional system with one transformer.



Prestige THX9321 and 2-heat / 2-cool conventional system with one transformer

Typical wiring for geothermal radiant heat, geothermal forced-air and backup heat with one transformer.



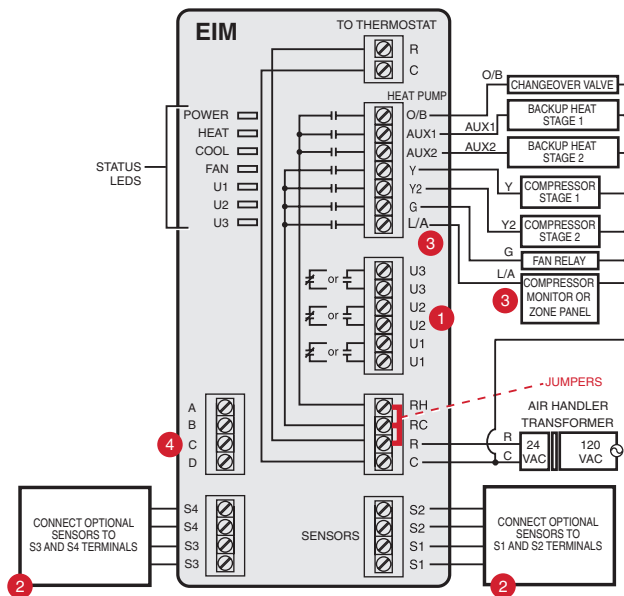
Prestige THX9321 and geothermal radiant heat, geothermal forced-air and backup heat with one transformer

- 1 U1 and U2 terminals are dry contacts.
- 2 L/A terminal sends continuous output when thermostat is set to EM HEAT mode except when set up for Economizer or TOD. See "Economizer Module Wiring Diagrams" beginning on page 151.
- 3 U1 or U2 terminals must be used for geothermal radiant heat (ISU 2010). Thermostat allows 2 stages of radiant heat—geothermal (stage 1) and boiler (stage 2).
- 4 "U" terminals are normally open dry contacts when set up for geothermal radiant heat. You must install a field jumper if radiant heat is powered by system transformer. Do NOT install a field jumper if radiant heat has its own transformer.
- 5 Remove jumper if using separate transformers.
- 6 Connect the THP9045 Wiresaver Module to the K terminal in heating/cooling applications that do not have a common wire at the thermostat. The K terminal cannot be used in heat-only applications. See THP9045 installation instructions for more information.

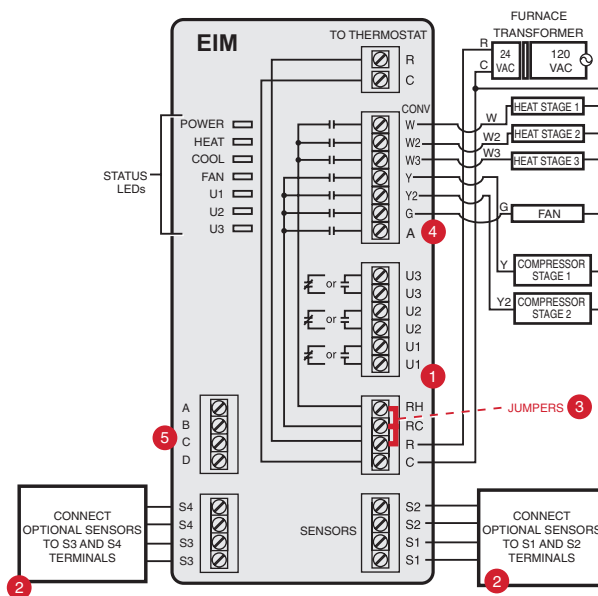
NOTE: For additional set-up, wiring, and operation, see installation manual.

WIRING - EIM

Typical wiring of a heat pump system with up to 4-stage heat and 2-stage cool with one transformer



Typical wiring of a conventional system with up to 3-stage heat and 2-stage cool with one transformer



See installation instructions for additional wiring options.

NOTES

The RedLINK Internet Gateway requires a physical Ethernet connection to an open port on a user-supplied router. The router must be connected to the internet via a user's Internet Provider for access to the Honeywell server. There is no need for a static IP address. To date, there have been no reported issues with port blocking or firewalls preventing access.

In order to guard against possible wireless signal overload, assure that all wireless RedLINK devices including the RedLINK Internet Gateway are spaced a minimum of 2 feet apart from each other for proper operation.

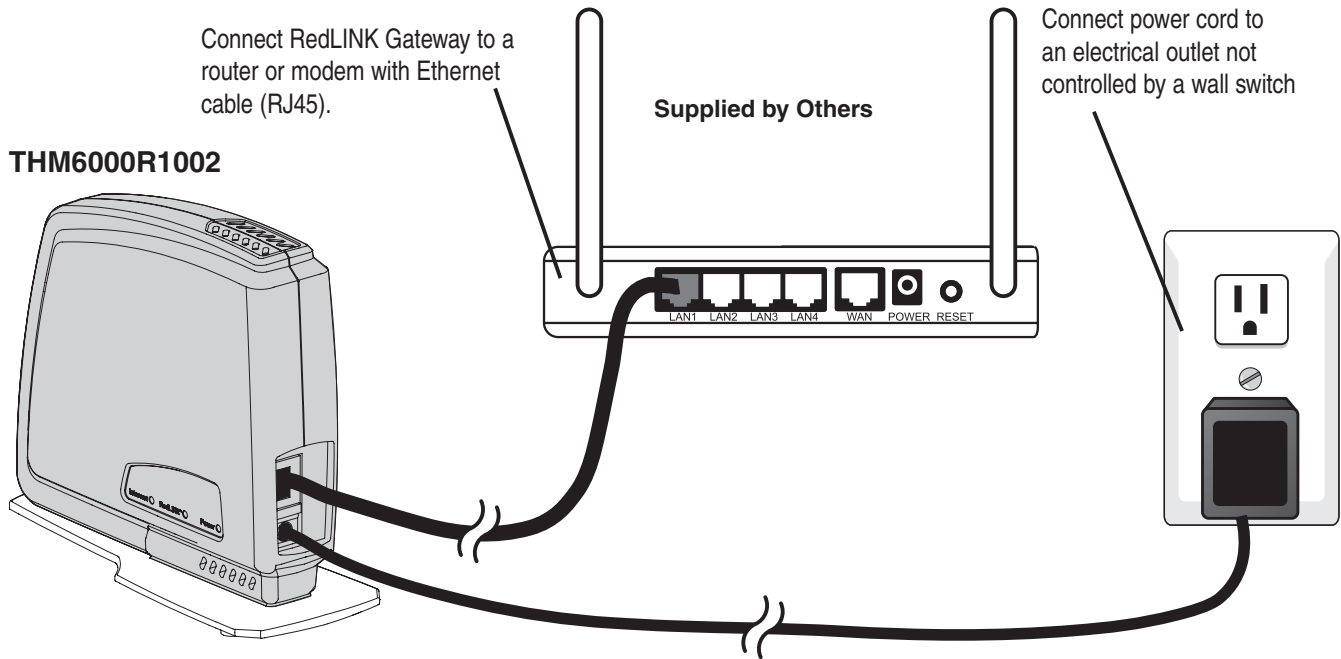
REDLINK WIRELESS GATEWAY (THM6000R1002) CONTRACTOR SETUP

1. Connect power to the RedLINK Internet Gateway using the supplied 120VAC power supply wall module.
2. Connect the supplied Ethernet cable from the RedLINK Internet Gateway to an available port on a designated Router (router supplied by others).
3. Using the Prestige Thermostat Contractor Installation Options Menu select Wireless Device Manager, then select Add Device.
4. Press and release the Connect button located on the bottom of the RedLINK Internet Gateway. The device will appear on the Thermostat. Exit the menu.
5. Note the Device MAC ID and Device CRC information on the bottom of the device (required for account assignment).

THERMOSTATS & CONTROLLERS

PROGRAMMABLE/WIRELESS THERMOSTAT PRESTIGE IAQ

GATEWAY SETUP



ACCOUNT SETUP

1. Visit www.mytotalconnectcomfort.com and click "Create an Account." There is no charge for this service.
2. Enter required account information including email, password and security questions/answers.
3. Account verification email will be sent to account email - log into email and validate account to return to www.mytotalconnectcomfort.com
4. Enter New Location for RedLINK Internet Gateway including location type (commercial or residential) and alert email accounts
5. Assign RedLINK Internet Gateway to location by entering the unique device MAC ID and device CRC information (Found on bottom of THM6000R1002)

Account is now active and may be accessed via any supported web browser or smart phone application.

THERMOSTATS & CONTROLLERS

PROGRAMMABLE/WIRELESS THERMOSTAT PRESTIGE IAQ



ORDERING INFORMATION

PRESTIGE KITS		
Kit Part Number	Included in Kit	
	Part Number	Description
Prestige IAQ Kit YTHX9421R5101WW	THX9421R5021WW	Thermostat - White Front, White Side
	THM5421R1021	Equipment Interface Module
	C7089R1013	Wireless Outdoor Sensor
	50062329-001	Discharge/Return Sensors (Qty. 2)
Prestige IAQ Kit YTHX9421R5101BB	THX9421R5021BB	Thermostat - Black Front, Black Side
	THM5421R1021	Equipment Interface Module
	C7089R1013	Wireless Outdoor Sensor
	50062329-001	Discharge/Return Sensors (Qty. 2)
Prestige IAQ Kit YTHX9421R5101SG	THX9421R5021SG	Thermostat - Silver Front, Gray Side
	THM5421R1021	Equipment Interface Module
	C7089R1013	Wireless Outdoor Sensor
	50062329-001	Discharge/Return Sensors (Qty. 2)
Prestige IAQ Kit YTHX9421R5101WG	THX9421R5021WG	Thermostat - White Front, Gray Side
	THM5421R1021	Equipment Interface Module
	C7089R1013	Wireless Outdoor Sensor
	50062329-001	Discharge/Return Sensors (Qty. 2)
Prestige IAQ Kit YTHX9421R5085WW	THX9421R5021WW	Thermostat - White Front, White Side
	THM5421R1021	Equipment Interface Module
	50062329-001	Discharge/Return Sensors (Qty. 2)
Prestige IAQ Kit YTHX9421R5085BB	THX9421R5021BB	Thermostat - Black Front, Black Side
	THM5421R1021	Equipment Interface Module
	50062329-001	Discharge/Return Sensors (Qty. 2)
Prestige IAQ Kit YTHX9421R5085SG	THX9421R5021SG	Thermostat - Silver Front, Gray Side
	THM5421R1021	Equipment Interface Module
	50062329-001	Discharge/Return Sensors (Qty. 2)
Prestige IAQ Kit YTHX9421R5085WG	THX9421R5021WG	Thermostat - White Front, Gray Side
	THM5421R1021	Equipment Interface Module
	50062329-001	Discharge/Return Sensors (Qty. 2)
Prestige 2.0 Kit YTHX9321R5061	THX9321R5030	Thermostat
	REM5000R1001	Portable Comfort Control
Prestige 2.0 Kit YTHX9321R5079	THX9321R5030	Thermostat
	C7089R1013	Wireless Outdoor Sensor
Note: Part numbers can be ordered separately.		